

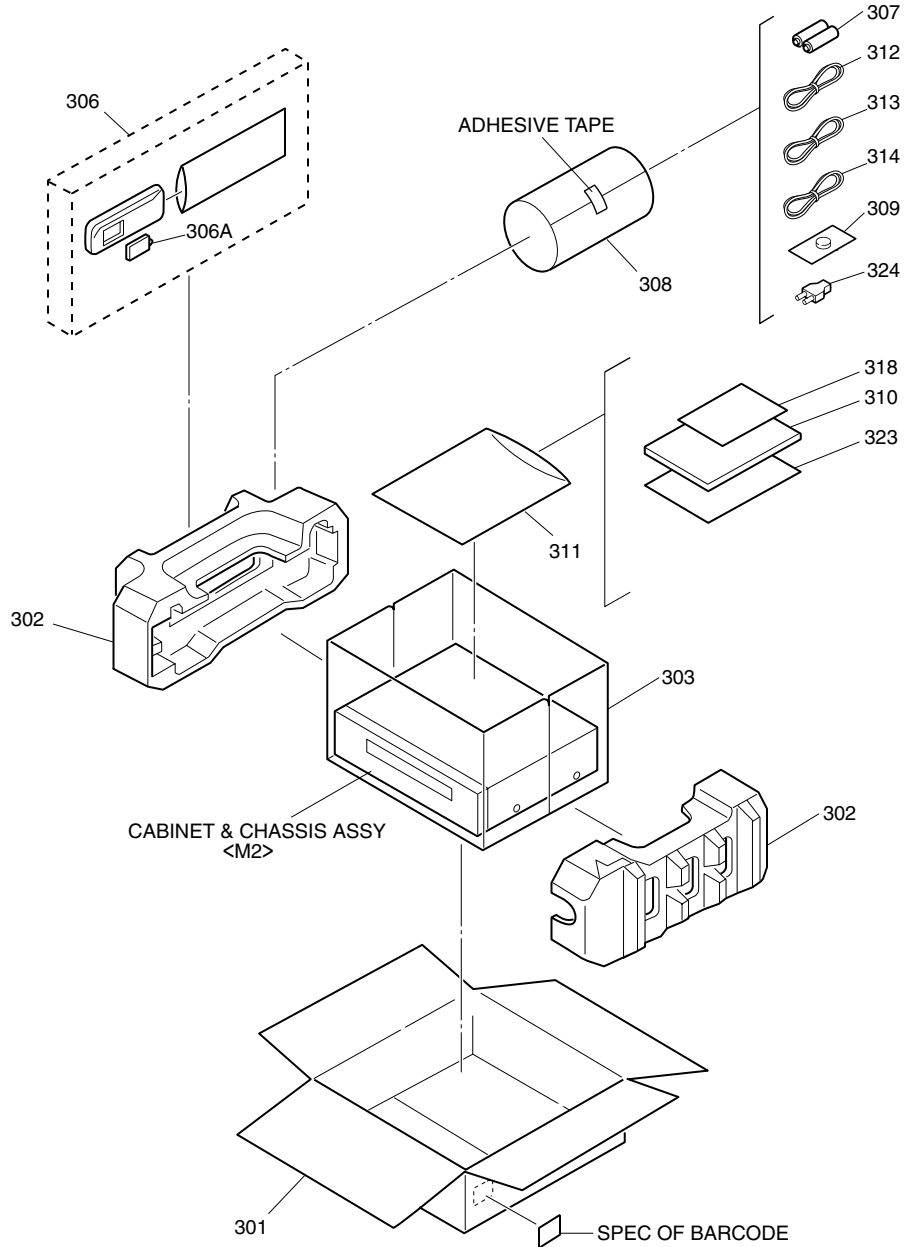
SECTION 5 PARTS LIST

SAFETY PRECAUTION

Parts identified by the \triangle symbol are critical for safety. Replace only with specified part numbers.

5.1 PACKING AND ACCESSORY ASSEMBLY <M1>

The instruction manual to be provided with this product will differ according to the destination.



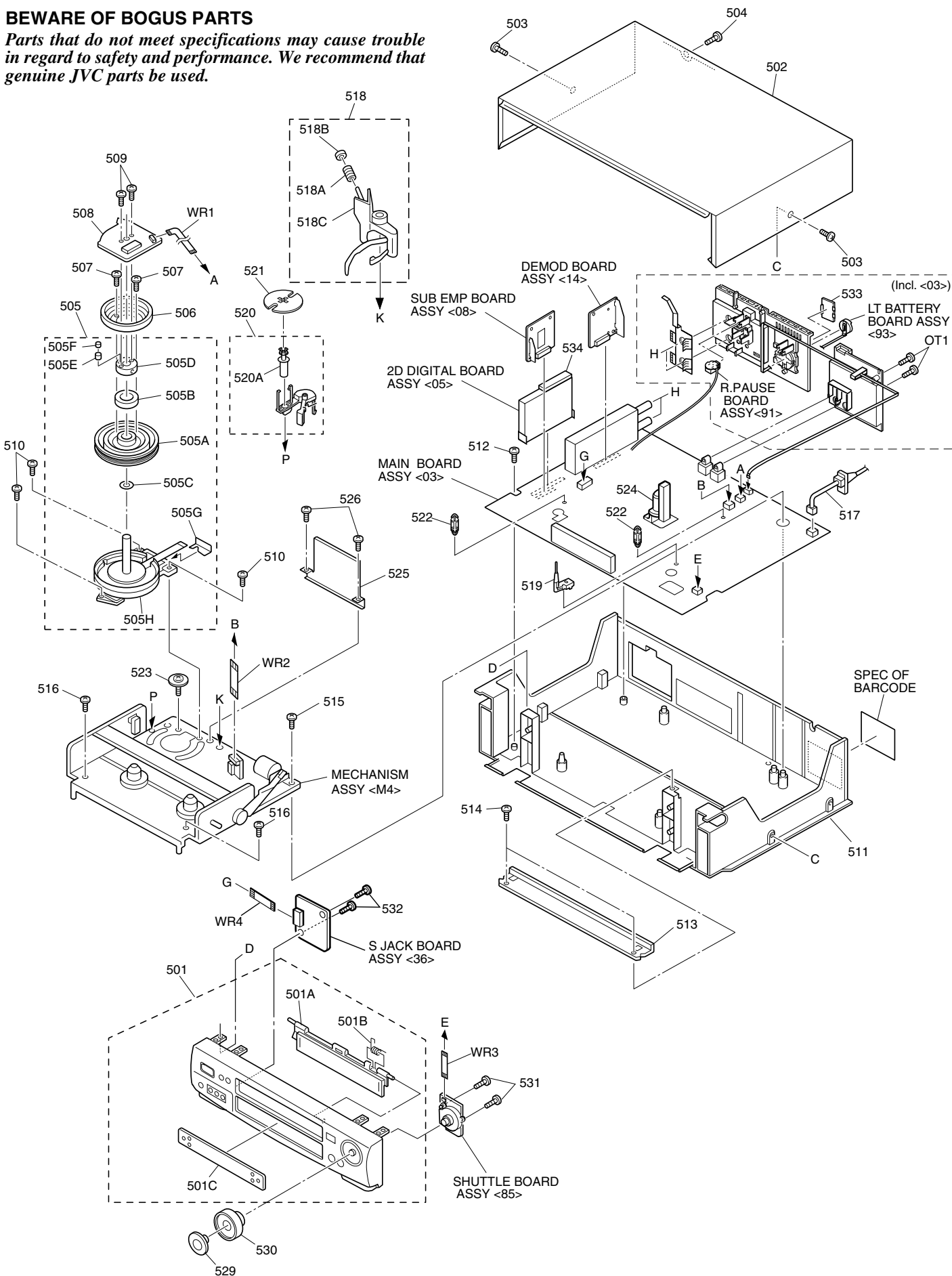
# \triangle REF No.	PART No.	PART NAME, DESCRIPTION	# \triangle REF No.	PART No.	PART NAME, DESCRIPTION

PACKING AND ACCESSORY ASSEMBLY <M1>					
	301	LP30658-024B		308	QPC02202230P
	302	LP30718-001A		\triangle 309	PECA0903
	303	PQM30021-93		\triangle 310	LPT0382-001B
	306	LP20878-004B		311	QPC02503530P
	306A	LP40610-002A		312	PEAC0446-120
	307	-		313	PEAC0359-120
				314	QAM0004-002
				318	LP40437-001A
				323	PU36560-2
				\triangle 324	PEMC1012

5.2 CABINET AND CHASSIS ASSEMBLY <M2>

BEWARE OF BOGUS PARTS

Parts that do not meet specifications may cause trouble in regard to safety and performance. We recommend that genuine JVC parts be used.



△ REF No. PART No. PART NAME, DESCRIPTION

CABINET AND CHASSIS ASSEMBLY <M2>

△ 501	LP10289-035C	FRONT PANEL ASSY
501A	LP20868-013A	CASSETTE DOOR
501B	PQ46448	TORSION SPRING
501C	LP20869-049A	DISPLAY WINDOW
△ 502	LP10013-031C	TOP COVER
503	QYTDSF3010R	SCREW,X2 TOP COVER(SIDE)
504	QYTDSF3010M	SCREW,TOP COVER(REAR)
505	LP20617-006A	DRUM SUB ASSY
505A	LP20616-003A	UPPER DRUM ASSY
505B	PDM4439	CAP
505C	PDM4444-19-2	WASHER
505D	LP40572-001A	COLLAR ASSY
505E	LP40323-001A	CONTACT
505F	LP30004-014A	COMPRESSION SPRING
505G	LP40174-001B	FPC PLATE
505H	LP20615-002A	LOWER DRUM ASSY
506	PDZ0179-1-4	ROTOR ASSY
507	QYSPSP3006Z	SCREW,X2
△ 508	QAR0119-001	STATOR ASSY
509	QYSPSPH2606Z	SCREW,X2
510	QYTDST2610Z	SCREW,X3 DRUM
△ 511	LP10108-015A	BOTTOM CHASSIS
512	QYTDSF3010Z	SCREW,MAIN
513	LP30312-001B	BRACKET(CHASSIS)
514	QYTDSF3010Z	SCREW,X2
515	QYTDSF4012Z	SCREW,MECHA
516	QYTDSF3010Z	SCREW,X2 MECHA
△ 517	QMP73J0-170	POWER CORD
518	LP40369-001D	CLEANER ASSY
518A	PQ46418-1-2	CLEANER ROLLER
518B	PQ46419-1-2	CLEANER
518C	LP30407-001D	CLEANER ARM
519	LP40407-001A	KNOB ASSY
520	LP40370-001E	ROLLER ARM ASSY
520A	PDM4311A-1	ROLLER ASSY
521	PQ44230	INERTIA PLATE
522	LP40226-001A	PC SUPPORT,X2
523	PQ40413	SPECIAL SCREW,MECHA
524	LP40253-001B	STOPPER
525	LP30356-002C	DRUM SHIELD
526	QYTDST2606Z	SCREW,X2
529	LP30651-004A	KNOB(JOG)
530	LP30652-002A	KNOB(SHUTTLE)
531	QYTDSF2608Z	SCREW,X2 SHUTTLE
532	QYTDSF2608Z	SCREW,X2 S JACK
533	LP30336-001A	CAP.LT.BATTERY
534	LP30002-088B	SPACER,S.FRAME
WR1	QUQ212-0518CG	FFC WIRE,DRUM CN3002
WR2	WJT0005-002A	E-CARD WIRE,A/C HEAD CN2001
WR3	QUQ112-0914CG	FFC WIRE,FRONT CN7001
WR4	WJT0026-001A	E-CARD WIRE S JACK C7103